

Light-emitting diode module

Prism PRO2 HE+

TECHNICAL INFORMATION

LED type	2835
Input	12V DC
Color temperature	6500 K
Beam angle	165°
Protection level	IP 67
Center-to-center distance	200 mm
Working temperature	-30°C + 50°C
Available colors	●
Power	0,72 W
Light output	116 lm

FOR CHANNEL LETTERS

MODULE DESIGNED FOR CHANNEL LETTERS

DEPTH 80-120 MM

BEST FOR 80/120MM DEEP LIGHTBOXES

MIN MAX

1:1,8 RATIO

RECOMMENDED DEPTH: CC DISTANCE RATIO

UP TO 160LM/W

HIGH EFFICIENCY LED INSIDE

IP 67

DUST AND WATER PROTECTED

116 lm

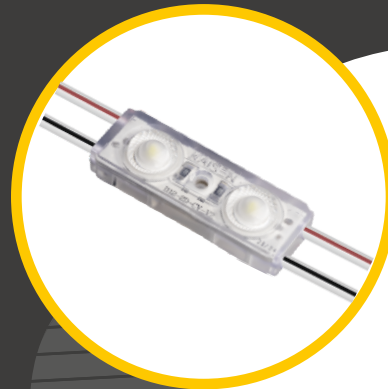
HIGH BRIGHTNESS 116 LM PER MODULE

6500 K

6500 K AND OTHER COLORS

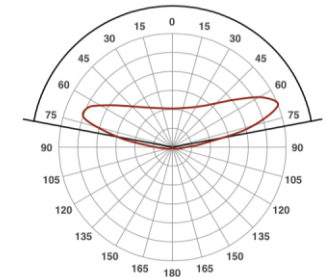
5 YEARS WARRANTY

5 YEAR EXTENDED WARRANTY

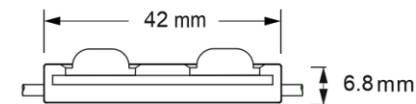
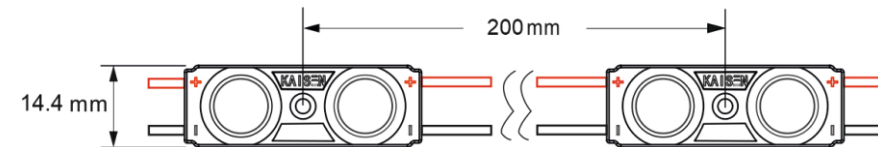


LIGHT DISTRIBUTION GRAPH

Beam angle is 165°



DIMENSIONS



PACKAGING

Packing type	Chain	Package	Box
Quantity	20 pcs	200 pcs	2000 pcs
Weight	0,2 kg	2 kg	20,5 kg

CONNECTION

